

无锡光泰玻璃制品有限公司

WUXI GUANGTAI GLASS LENS CO.LTD

PRODUCT SPECIFICATION

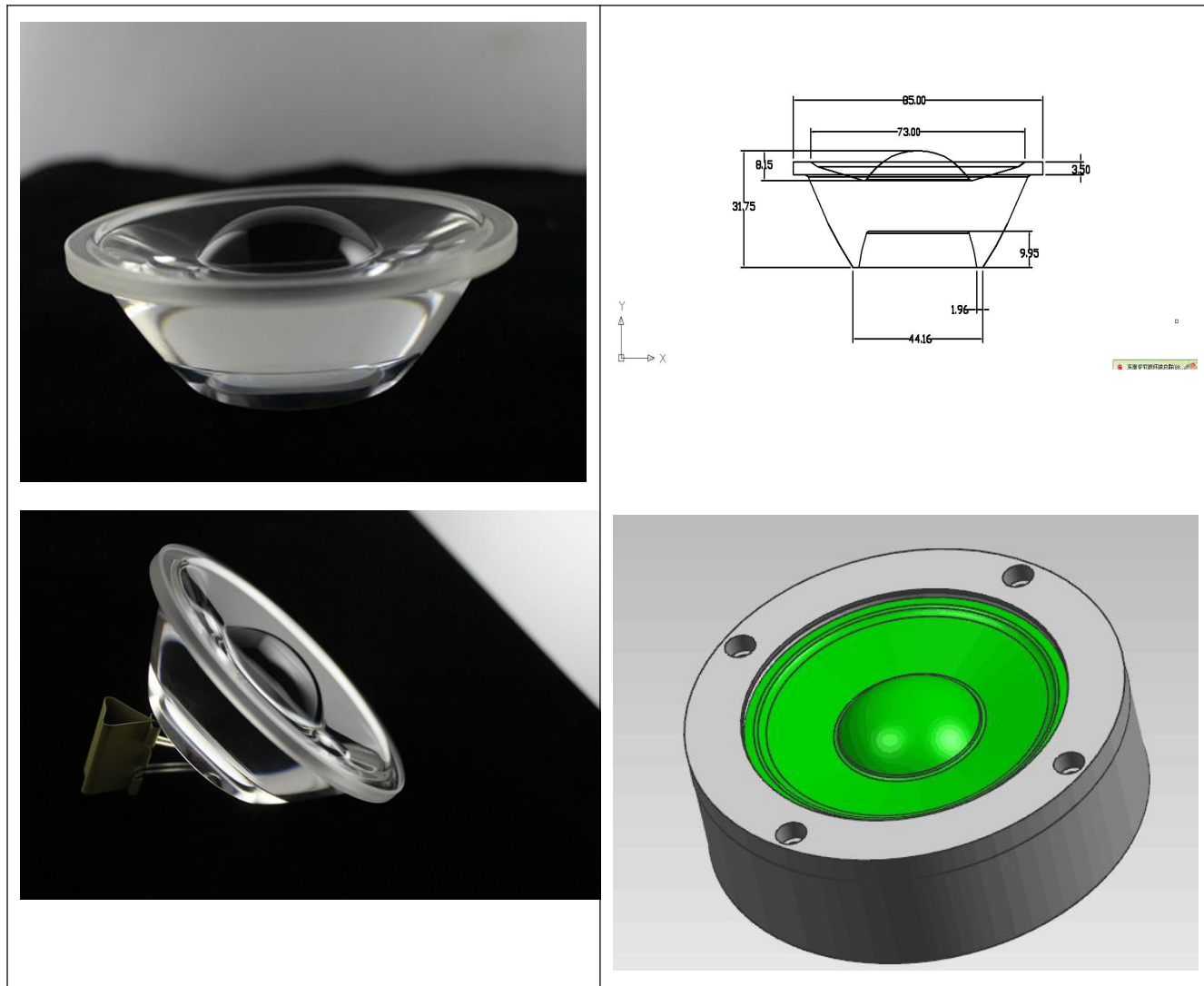
PART NO 产品型号 : GT-85-10

Checked 审核	Prepared 制作
Customer Approve 客户核准	

无锡光泰玻璃制品有限公司

Production Introduction

1. Model: GT-85-10 with silicon gasket and metal holder

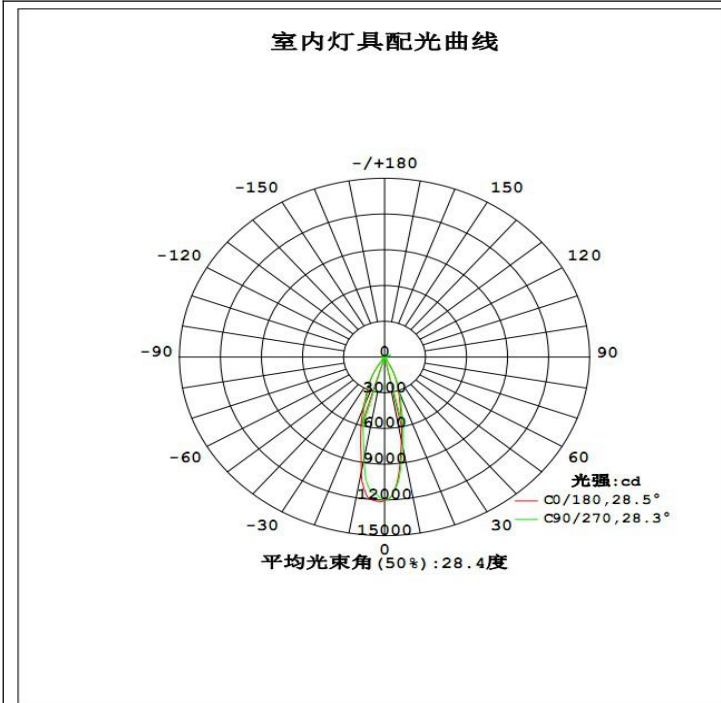


二. Features:

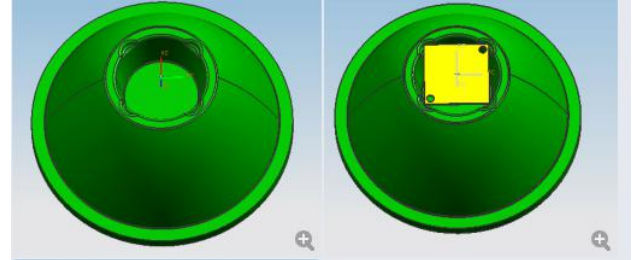
- (1) Material: Optical Glass (Borosilicate glass)
- (2) Angle : 30 degree
- (3) Heat resistant: -50-500 degree
- (4) Transmittance: above 94%
- (5) Refractive index: 1.474
- (6) Quality: clear and transparent, no bubble and impurity inside

无锡光泰玻璃制品有限公司

二、Engineering drawing



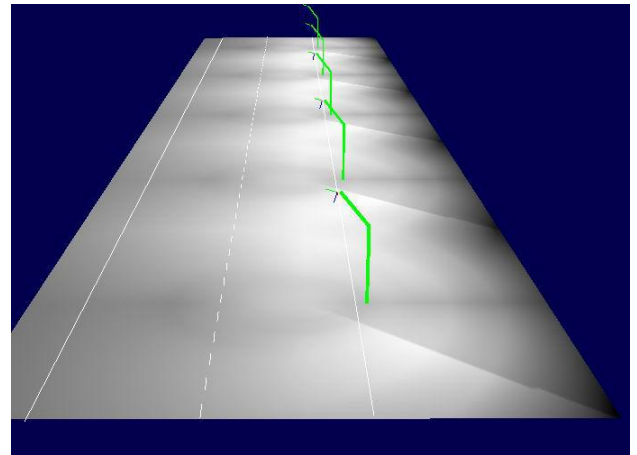
Light distribution



Position of led



Light Pattern



Scene simulation effect chart

无锡光泰玻璃制品有限公司

三. Application:

Used for integrated chip 30-100w, high bay light , canopy light, industrial light, spot light and so on. Suitable for setting up on high place.



四. Assembling:

Need to make a bottom base to hold the lens. Below is the samples of assembling.

